



Key Dates

06/05/24	Bank Holiday - School closed to all
08/05/24	No Mass today
09/05/24	Mass - Ascension at 10:45am in the school hall - ALL WELCOME
13/05/24	Year 6 SATs Week
15/05/24	EYFS Shard End Library Visit
21/05/24	Year 3 Trip Castle Bromwich Hall Gardens
23/05/24	Year 2 Trip Cannock Chase
23/05/24	Parishioners tea in the gap room at 12:30pm
24/05/24	Inset Day - School closed to pupils
03/06/24	School open for all



Guided by the teachings of the Church we pray, work, celebrate, and care for each other and other people using the gifts we have been given by God the Father, Son and Spirit.

Mrs Milligan and Mr Spindlow's Message

Our Year 6 children have had a wonderful time at Alton Castle. Children spent two nights at Alton Castle where they deepened both their friendships and their relationship with God.

The children took part in a number of activities including: Archery, Trekking, Cycling, Survival and low ropes and the feedback and messages we received from the children and staff at the castle have shown how much they thoroughly loved this experience.

Mr Spindlow, Mrs Milligan and Fr Paul had the pleasure of visiting the children at the castle and joining the children for evening meal and Mass on Thursday night and it was lovely to see how independent and mature all the children were a credit to the school and their families.



This week, children and staff celebrated St George's Day. We wore red and white and joined in prayer to ask God for bravery as shown by our patron saint, Saint George.

This Week's Gospel



Today we hear how Jesus is the vine and how he gives life to us, his branches. Jesus calls us his branches because he supports us, like a tree trunk supports its branches. And he wants us to bear fruit for him. Jesus wants us to stay close to him and follow his teachings. This means being the best we can be, loving each other, and loving the beautiful world he has given us.

Gospel: John 15:1-8

Jesus said to his disciples:

"I am the real vine, and my Father is the gardener. He breaks off every branch in me that does not bear fruit, and he prunes every branch that does bear fruit, so that it will be clean and bear more fruit. You have been made clean already by the teaching I have given you. Remain united to me, and I will remain united to you. A branch cannot bear fruit by itself; it can do so only if it remains in the vine. In the same way you cannot bear fruit unless you remain in me.

"I am the vine, and you are the branches. Those who remain in me, and I in them, will bear much fruit; for you can do nothing without me. Whoever does not remain in me is thrown out like a branch and dries up; such branches are gathered up and thrown into the fire, where they are burnt. If you remain in me and my words remain in you, then you will ask for anything you wish, and you shall have it. My Father's glory is shown by your bearing much fruit; and in this way you become my disciples



This Week's Awards



Virtues Award

EYFS - Jaxson
Year 1 - Aminah
Year 2 - Jax
Year 3 - Toby
Year 4 - Evan
Year 5 - Emily S
Year 6 - All of Y6



Reader of the Week

EYFS - Baby-Queenie
Year 1 - Reuben
Year 2 - Luna
Year 3 - Lacey R
Year 4 - Elijah
Year 5 - Beau
Year 6 - Amelia



PE Star of the Week

EYFS - Adam
Year 1 - Ava
Year 2 - Aoife
Year 3 - Harry
Year 4 - Mylah
Year 5 - Cassius
Year 6 - Isabella M

Star Pupils

EYFS

Paisley-Jane and Sylvie-Fae

Year 1

Marnie and Ameer

Year 2

Lily and Scarlett

Year 6

All of Y6

Year 3

Troy and Jude O

Year 4

Oliver and Mason

Year 5

Ava-Tia and Francesca

This Week's Attendance



Attendance Counts

Year Group	
EYFS	93.6
Year 1	95.9
Year 2	92.7
Year 3	95.2
Year 4	94.5
Year 5	91.0
Year 6	93.0

Attendance Update

Schools can fine parents for the unauthorised absence of their child from school, where the child is of compulsory school age.

Guardian Angels have now had to fine 10 families following Birmingham City Council guidelines

If issued with a penalty notice, parents must pay £60 within 21 days or £120 within 28 days. The payment must be made directly to the local authority..

If the payment has not been made after 28 days, the local authority can decide whether to prosecute the parent.

Attendance Support

Mrs Tennant and the attendance team are always available to offer advice and support to help ensure your child is able to attend every day and reach their full potential. To book an appointment, please call the office on: 0121 747 2782

Every Day Counts

Just before the holiday, all schools in England received a message from the Secretary of State for Education, outlining the concerns linked to attendance nationwide. Whilst our attendance has improved and the number of children below 90% attendance has decreased, there is still work to be done. Our teachers are providing an excellent education in every classroom, everyday - every day missed is a missed learning opportunity. Attendance will remain a huge focus for the whole school this year.

Attendance Ladder



Other News



KS2 Year 4 MULTIPLICATION TABLES CHECK 2024

WHAT

- Pupils are tested on their ability to answer multiplication questions up to 12 with an emphasis on the 6, 7, 8, 9 and 12 (these are considered to be the most difficult)
- The tests are online and on-screen
- The check contains 25 questions with 6 seconds to answer each one
- There is a 3 second pause in-between each question, before the next one appears on screen
- Before the test, schools can access a practice area for children to become familiar with the style of check
- Each check takes less than 5 minutes per child
- There are multiple versions of the test. The version each pupil gets is selected at random
- There is no expected pass rate or threshold

WHO

- The Multiplication Tables Check (MTC) is a statutory test for Year 4 pupils
- Children will not be required to retake the test if they do not get a high enough score
- Schools will be required to report the results of each child to their parents or carers

WHY

- The purpose of the Multiplication Tables Check is to determine whether pupils can fluently recall their times tables up to 12
- The check will help schools to identify pupils who require additional support

WHEN

- 3rd - 19th June: Schools can choose a day within these 2 weeks to complete the test
- The test can take place on one day or across several days
- 17th - 21st June: Timetable variation week for pupils who were absent during the MTC weeks

Year 6 KS2 SATS 2024

	Date	Test	Duration	Marks	Details
English	Monday 13th May	Grammar & Punctuation (Paper 1)	45 Minutes	50	A written test with a mixture of grammar and punctuation questions.
		Spellings (Paper 2)	Approx 20 mins (not timed)	20	An oral spelling test consisting of 20 words. This score is added to the grammar & punctuation paper score to give a final mark.
	Tuesday 14th May	English Reading	60 Minutes	50	One paper with questions that are based on 3 different texts of increasing difficulty (fiction & non-fiction).
Mathematics	Wednesday 15th May	Mathematics Arithmetic (Paper 1)	30 Minutes	40	Involves mathematical calculations covering all four operations (+, -, x, ÷) including fractions, decimals and percentages.
		Mathematics Reasoning (Paper 2)	40 Minutes	35	Both of these papers assess mathematical fluency, with word problems and reasoning. All 3 maths paper's scores are added together to give a final mark.
	Thursday 16th May	Mathematics Reasoning (Paper 3)	40 Minutes	35	

- There are 6 tests over a course of 4 days (3 x English and 3 x Maths)
- Writing and Science are teacher assessed using evidence gathered throughout Year 6
- Schools can test anytime between 7am and 7pm on the day of each test
- All test papers are sent off to be externally marked
- Results will be made available to schools in July

Silly School Education

KS1 PHONICS SCREENING CHECK 2024

WHAT

- The test is administered 1:1 to each pupil in school by a teacher
- The check contains 40 words divided into two sections of 20 words
- Both sections contain a mixture of real words and nonsense words (nonsense words are phonically decodable but are not actual words)
- Each pupil is awarded a mark between 0 and 40
- There is no formal time limit, but each check takes about 10 minutes

WHO

- The phonics screening check (PSC) is a test for Year 1 pupils
- The school will report each child's results by the end of the summer term
- If a pupil does not meet the expected standard at the end of Year 1, a programme of support should be put in place
- The teacher will consider a re-take for the pupil in Year 2

WHY

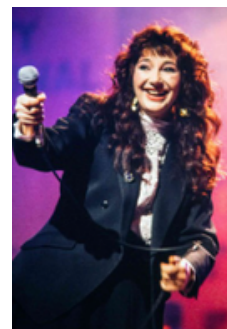
- The phonics screening test is a statutory assessment that confirms whether or not pupils have met the expected standard in phonic decoding
- It reveals which pupils may need additional support

WHEN

- 10th - 19th June: Schools can choose a day within this week to complete the test
- The test can take place on one day or across several days
- 17th - 21st June: Timetable variation week for pupils who were absent during PSC week

Composer of the Week

Kate Bush



- As a child, Bush studied violin and piano
- In 1978, Bush released her first single 'Wuthering Heights' the song topped the charts for 4 weeks
- Kate shares her birthday with Wuthering Heights author Emily Bronte
- Kate is a vegetarian and doesn't wear fur
- Bush was the youngest child of an artistic family

Earth Day

Linked to Catholic Social Teachings and looking after God's planet, Guardian Angels celebrated Earth Day on Monday. The theme for this year is plastics vs planet, giving children the opportunity to look at the negative impact that plastic has on our environment locally, nationally and globally.



Safeguarding



Safeguarding Tip of the Week

Safeguarding Responsibilities

The main safeguarding document relevant to schools 'Keeping Children Safe in Education', strongly states that 'safeguarding is everybody's responsibility'. Safeguarding means keeping children safe from harm or neglect. There are lots of ways in which we safeguard children. These include: making sure the school site is physically safe, supporting families with varying needs, ensuring children are able to talk to an adult if they feel unsafe and ensuring that safeguarding underpins the culture and ethos in school. If you are concerned about the safety of a child you can contact the Children's Advice Support Service on 0121 303 1888. Or speak to a member of our school safeguarding team. If you feel a child is at immediate risk of significant harm, contact West Midlands police on 999.

E- Safety Tip

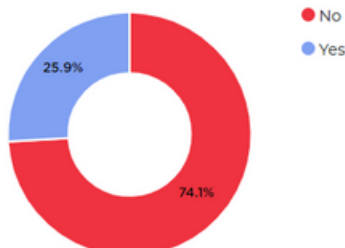


VOTES FOR SCHOOLS

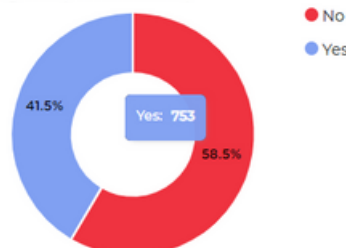
This Weeks Votes

Would you prefer to use an under-16s phone? (KS2)
Do you have too much screen time? (KS1)

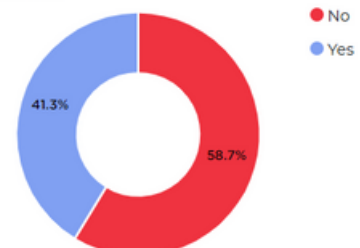
Your School



Regional (West Midlands)



National



Other News



Right of the Week

Article 9 (separation from parents)



Children must not be separated from their parents against their will unless it is in their best interests (for example, if a parent is hurting or neglecting a child). Children whose parents have separated have the right to stay in contact with both parents, unless this could cause them harm.

Virtues of the Half Term

Eloquent & Truthful

Pupils at Guardian Angels are growing to be eloquent and truthful in what they say of themselves, the relations between people, and the world.

We help our pupils grow by developing an eloquent language which pupils can use to understand and articulate their emotions, beliefs, and questions, encouraged by the example of their teachers to be truthful in the way they represent themselves and speak about the world.



Birthday Celebrations this Week

Arlena (EYFS), Abigail (Year 2) and Ogooluwa (Year 6)



Best Wishes from your Guardian Angels Family

Walk to School Month

During May, we are encouraging children to walk to school as many times as possible. Badges will be awarded to those who walk to school a minimum of three times a week.

Weekly Prayer

Generous God, support us in all that we do as a vine supports its branches, and help us to support and share with others around the world. Amen.

Have a lovely weekend and God Bless,

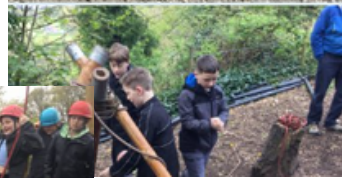
Mrs Helen Milligan, Mr Spindlow and all the staff at Guardian Angels

How often should my child be reading at home?

KS1		KS2
Year 1	Year 2	
Children should read daily with a focus on the Little Wandle book that the child is also reading in school. Big Cat Phonics can be used to access the electronic library of books your child should be reading.	Children will select a book based on their reading age which will be changed weekly. Children are expected to read 10 minutes of their reading book each night. Children should read aloud to an adult or older sibling during the week where possible to support their development of reading fluency and expression.	Children will select a book based on their reading age which will be changed weekly. Children are expected to read for a minimum 15 minutes of their reading book each night; if children do not manage it one night, they should read extra pages on other nights. Children should read aloud to an adult or older sibling during the week where possible to support their development of reading fluency and expression.
Children should be heard read their own story books from home/be read to by parents e.g. bed time story which allows children to have lots of exposure to modelling of tone, intonation, expression etc. Please record and sign all instances of reading that take place at home in the child's reading record.		Though many children in KS2 are 'free readers' it is important that listening to them read aloud occurs during the week. As in KS1, having stories read aloud to them should continue, further developing tone, intonation and expression as the text becomes more complex. Exposure of and discussion around word meaning, inferred messages and news and magazine articles is beneficial.



Alton Castle 2024



Upcoming Mass



ASCENSION OF THE LORD - HOLY DAY OF OBLIGATION



Please join us for Mass at Guardian
Angels School

MAY

9th

10.45AM

Behold, I am with you always even unto
the end of the age.



BE PART OF SHAPING THE FUTURE OF OUR CHURCH

Mission Planning Meeting

23

May
2024

7.00pm

WE ARE ALL INVITED TO A MEETING AT **GUARDIAN
ANGELS CATHOLIC PRIMARY SCHOOL, HURST LANE,
SHARD END, B34 7NH.**

WE WILL LOOK AT WHAT WE ARE DOING WELL IN OUR FIVE CATHOLIC PARISH
CLUSTER, TO THE EAST OF BIRMINGHAM AND HOW WE COULD WORK TOGETHER
IN THE FUTURE, TO SERVE OUR COMMUNITIES AND SHARE GOD'S LOVE.

PLEASE COME ALONG AND SHARE YOUR IDEAS.